



# Cheshire East Safeguarding Adults Board Annual Report 2012/13

This annual report provides an overview of the Cheshire East Safeguarding Adults Board (LSAB) and the work it has achieved over the period April 2012 to 31st March 2013. This is the 4th annual report of the board. The board co-ordinates locally the inter-agency partnership arrangements to safeguard vulnerable adults from harm.

The LSAB aims to ensure Cheshire East is a borough where vulnerable adults are safe but also empowered to make their own decisions.

Further details -  
[www.cheshireeast.gov](http://www.cheshireeast.gov)

## Chair's Welcome:

**Sean Reynolds**

Independent Chair, Cheshire East Safeguarding Adults Board

Welcome to the Cheshire East Adult Safeguarding Board 2013 Annual Report. We hope it will help you further understand the work of the Board & spread the message that "safeguarding is everybody's business."

I joined the Board in November 2012 & have been impressed with the commitment & dedication of the partner organisations. We are all aware that protecting & safeguarding the most vulnerable members of our community is a vitally important job. Winterbourne View & Mid Staffs Hospital inquiries have reminded us that we need to do everything we can to safeguard vulnerable adults. As I

hope you will see from this report, we have made some progress in Cheshire East this year, but there is still much to do to promote better co-ordination amongst the agencies & ensure the effectiveness of safeguarding arrangements. You can see our 2013 Business Plan for information on the actions we are going to take this year to continue that progress.

We strongly believe an integrated whole family approach to safeguarding is most effective. To that end, we will continue to develop closer links with the Children's Safeguarding Board, already established through joint sub groups & chairing

arrangements. I am also encouraged that both the Adults & Children's Safeguarding Boards, with the Adult Board taking the lead, work closely with Cheshire East Domestic Abuse Partnership (CEDAP) who are developing an integrated commissioning strategy to tackle domestic abuse in our communities.

We will actively seek out & listen to the views of service users in order to improve the quality of services. We have a lot of work to do as a Board and are absolutely committed as a partnership to the task. Success will be reliant on local agencies and individuals to watch out for & safeguard the vulnerable.

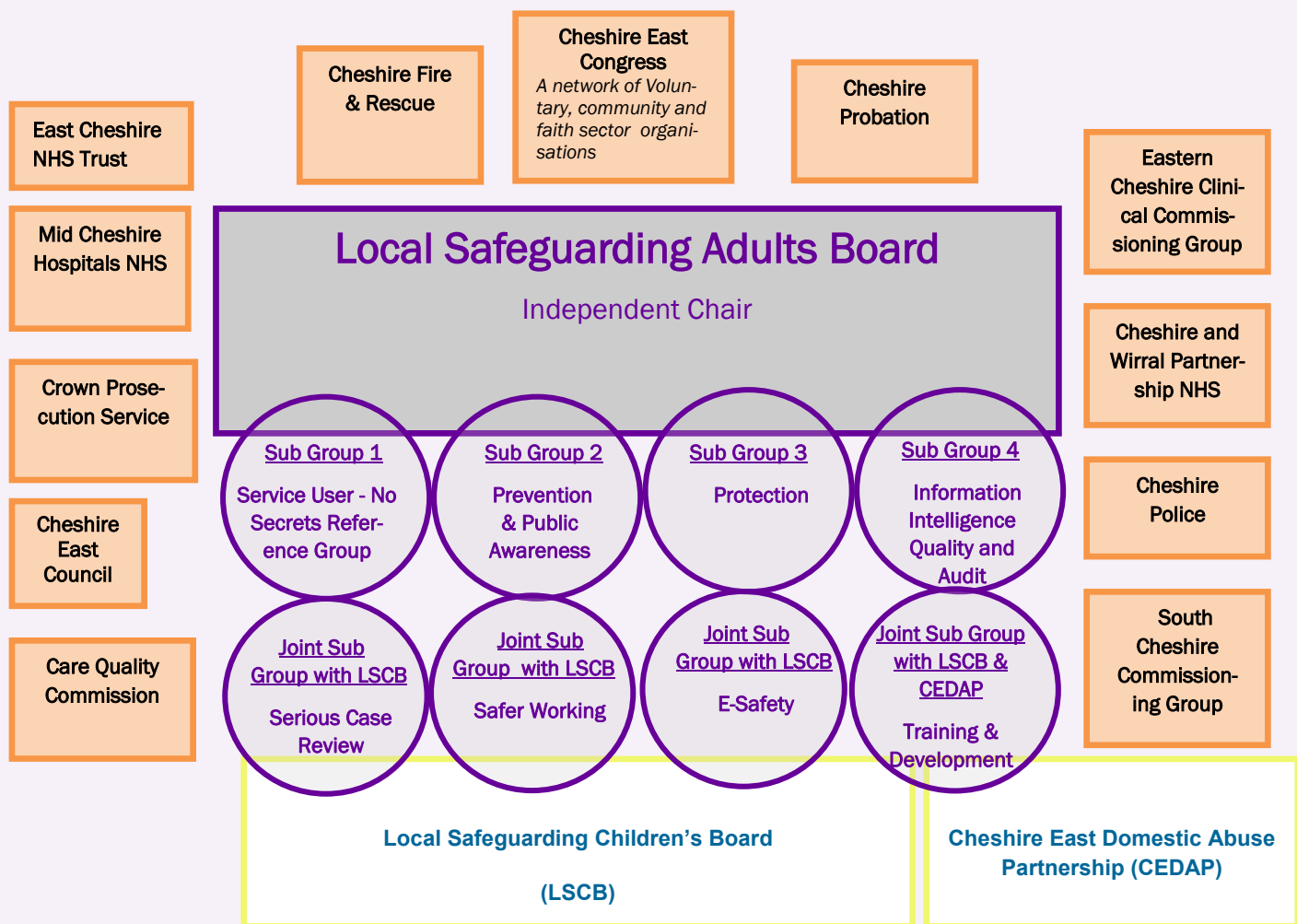
***"Safeguarding is everybody's business"***

## The Local Safeguarding Adults Board:

The Cheshire East Local Safeguarding Adults Board promotes the welfare of vulnerable adults. The members of the board are from a wide range of statutory, voluntary and other independent organisations; all of which have collective strategic responsibilities to oversee the development of the safeguarding of vulnerable adults within Cheshire East. All members are committed to raising awareness of adult safeguarding and ensuring that the work of the board prevents and protects vulnerable adults from abuse. The Safeguarding Adults Board meets every 8 weeks, and their work includes:

- Determining local safeguarding adults at risk policy
- Coordinating effective high quality safeguarding practices
- Monitoring and reviewing progress against the board's priorities
- Developing ways of working which will stop adult abuse
- Facilitating Safeguarding training
- Making adult safeguarding everyone's business
- Learning and reviewing safeguarding practices

# Safeguarding Adults Board Membership/ Operational Chart



## The Board's Sub-Groups

The LSAB has eight subgroups, each chaired/vice chaired by a member of the board. These have been established to deliver on the board's work plan. Over the last 18 months the board has merged some subgroups with the Local Safeguarding Children's Board and the Cheshire East Domestic Abuse Partnership.

**PREVENTION & PUBLIC AWARENESS:** Ensures that awareness of adult safeguarding is promoted across the borough and that mindful consideration is given to all communities within the borough including minority groups. One of the responsibilities of the group is to develop and review information for public and professionals regarding safeguarding adult issues.

**PROTECTION** This sub group carries out the development of policies, procedures and protocols for adult safeguarding. Its function is to ensure that all policies and procedures are both appropriate and operable. The group promotes effective working relationships between partner organisations and professional groups and facilitates a shared understanding and agreement about operational practices through policy development.

**INFORMATION INTELLIGENCE QUALITY AND AUDIT** As the board is responsible for ensuring that national policy and guidance is being adhered to locally, this subgroup develops a local mechanism of audit and quality assurance to ensure that a consistent approach is maintained across all partner organisations.

**NO SECRETS REFERENCE GROUP** This group was established during 2011. It is a priority of the Board to include service users, carers and the public in the work it's doing to keep people safe. This group determines the way that Adult Social Care and partners work with its service users, carers & the public. Information and advice from our service users helps to improve the Safeguarding Adults process and policy development.

**TRAINING & WORKFORCE DEVELOPMENT** This joint sub-group with the LSCB and CEDAP, ensures that development needs of staff and partners working with vulnerable adults have been agreed and that there is a broad range of training initiatives in place. The group ensures that both single and multi-agency training is delivered to a consistently high standard in all areas and that a process exists for evaluating its effectiveness.

**E-SAFETY**— as society increasingly uses social networking and other developing media to communicate, it is critical that safeguarding protocols and practices keep pace with the raft of communication methods in use. This group advises both the LSCB and LSAB on of potential safeguarding risks linked with technology and how this can be addressed.

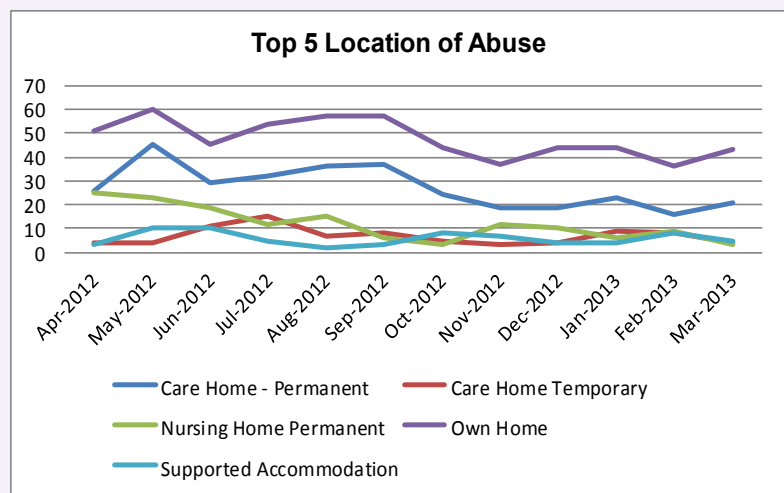
**SERIOUS CASE REVIEW**— The overall purpose of this joint LSCB/LSAB sub-group is to ensure when a Serious Case Review (SCR) is required that the panel and process is robust and clear. This group also oversees any Reflective Reviews undertaken by the multi-agency Safeguarding Unit (cases were lessons can be learnt but do not meet the threshold for a SCR)

**SAFER WORKING**— this joint Children’s and Adults Safeguarding Boards sub-group ensures that all agencies working or in contact with Vulnerable adults and children operate recruitment, supervision, management and working practices to safeguard vulnerable adults and children.

## Adult Safeguarding Activity within Cheshire East (2012-13)

The Safeguarding Adult Board is committed to supporting the enhanced data collection, and the development of systems to provide a strong basis for analysis and planning. The following graphs and charts represent the safeguarding activity within the borough over the last year:

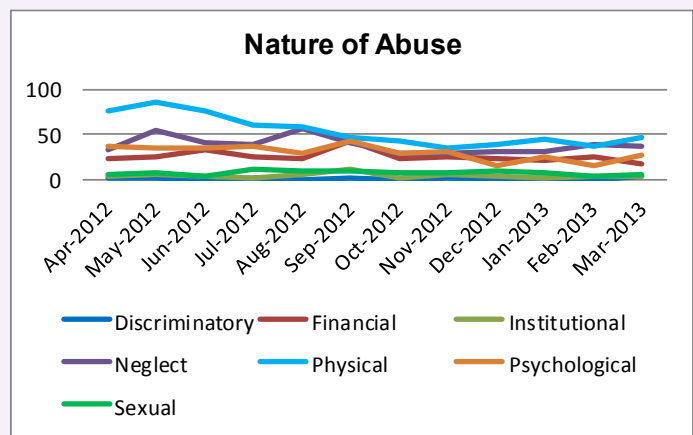
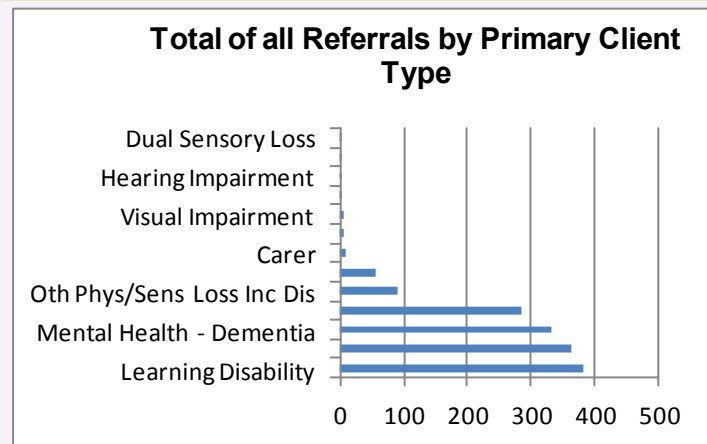
Since April 2012 Cheshire East has received 1,453 Adult Safeguarding Referrals — equating to an average of 121 per month.



Within Cheshire East areas the Safeguarding referral distribution is Crewe (25%), Congleton (21%), Macclesfield(22%), Knutsford (8%), Nantwich (7%), Wilmslow (7%), Poynton (5%).

The Financial and Neglect categories of abuse were significantly higher (ratio of circa 2:1) against victims/vulnerable people in the 65+ age group.

The majority of Safeguarding referrals involve people with a mental health condition. Followed by learning disabilities and a physical disabilities. Two thirds of all referrals are against the 65+ age group. Specifically in the 65+ age group service users that fall in the 85+ group account for over 40% of the total 65+ safeguarding referrals.



## Board's Achievements 2012/13

Highlights during the year include the the board auditing it's partners safeguarding adults protocols and procedures to ensure the partnership always aspires to achieve best practice. Work from this audit will inform the board's future work and supports the introduction of several key local policies including Reflective Reviews, Self-Neglect Protocols and Care Concern forms. These policies help ensure more appropriate referrals around safeguarding and that partners work together, sharing information, and learning lessons across agencies.

The No Secrets Reference Group has developed rapidly over the last year ensuring that the views of local adults who use Safeguarding Services are heard & that their

feedback is used to make further improvements. Service users were involved in the selection & interview process for the appointment of a joint Independent Chair for the LSAB and LSCB.

Working more closely with the LSCB ensures a 'whole family approach' and that professionals share their relative knowledge with each other as much as possible. The amalgamation of certain sub-groups further ensures that this approach is embedded in the partnership's work. The Service User Group are also in the process of working with the Board, planning our first joint conference with the LSCB and CEDAP which will take place during late Spring 2013.

The board has been very creative in its work to raise awareness both

with professionals and the public about adult abuse issues. It worked closely with other local groups and partnerships with a 'Spread the Warmth' winter campaign and the board has established a regular quarterly newsletter. After analysis of local financial abuse data; it worked with the Service user group and trading standards in a prevention awareness campaign.

Working closely with CEDAP the LSAB is proud that Cheshire East achieved 'White Ribbon Status' this year demonstrating a local partnership commitment in standing up to condemn violence against women.



### Future areas for development/ Challenges for 2013/14 & beyond -

The Cheshire East Safeguarding Board while achieving a high level of work during 2012/13 recognises that there are further key areas to develop over the upcoming year. The board is currently in the process of developing their Business Plan for 13/14. Some of the key challenges for the Local Safeguarding Adult's Board are:

- Responding to changes proposed by national guidance as they emerge , in particular, the Care & Support Bill
- Launching a new multi-agency Safeguarding Policy
- Hosting a multi-agency conference focussing on the service user's voice with the LSCB & CEDAP
- In response to ADASS guidance & knowledge gained from Reflective Reviews, over the next year the LSAB will continue to improve the skills of the workforce via access to appropriate training.
- Ensuring the recommendations from Winterbourne View and the Francis Report are being considered locally
- For the board to examine the quality of the application and practice of the Mental Capacity Act across Cheshire East.
- Developing our strategic plan for the oversight & management of multi-agency Safeguarding Adults work within Cheshire East, including strong links with both the Health and Well-being Board and Local Health Watch.
- Progressing our Outcomes based work, ensuring that Cheshire East is a borough where vulnerable adults are safe but also empowered to make their own decisions.
- All partners are experiencing budget restraints whilst increasing demands on safeguarding services. It is a priority of the board to ensure Partners work together effectively & efficiently to safeguard vulnerable adults during these financially constrained times.

**If you are concerned about a vulnerable adult who may be at risk of abuse, please call -**

**0300 123 5010** (8:30am—5pm)    **0300 123 5022** (out of hours)

For further information regarding the Cheshire East Safeguarding Adults Board please call - 01606 271815

[www.cheshireeast.gov.uk](http://www.cheshireeast.gov.uk)

[adultsafeguardingunit@cheshireeast.gov.uk](mailto:adultsafeguardingunit@cheshireeast.gov.uk)

